

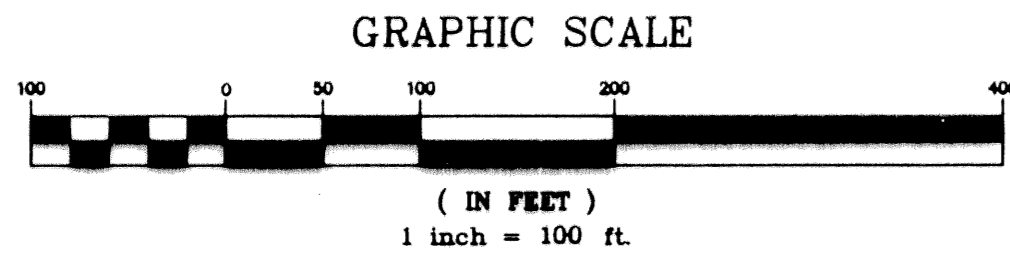
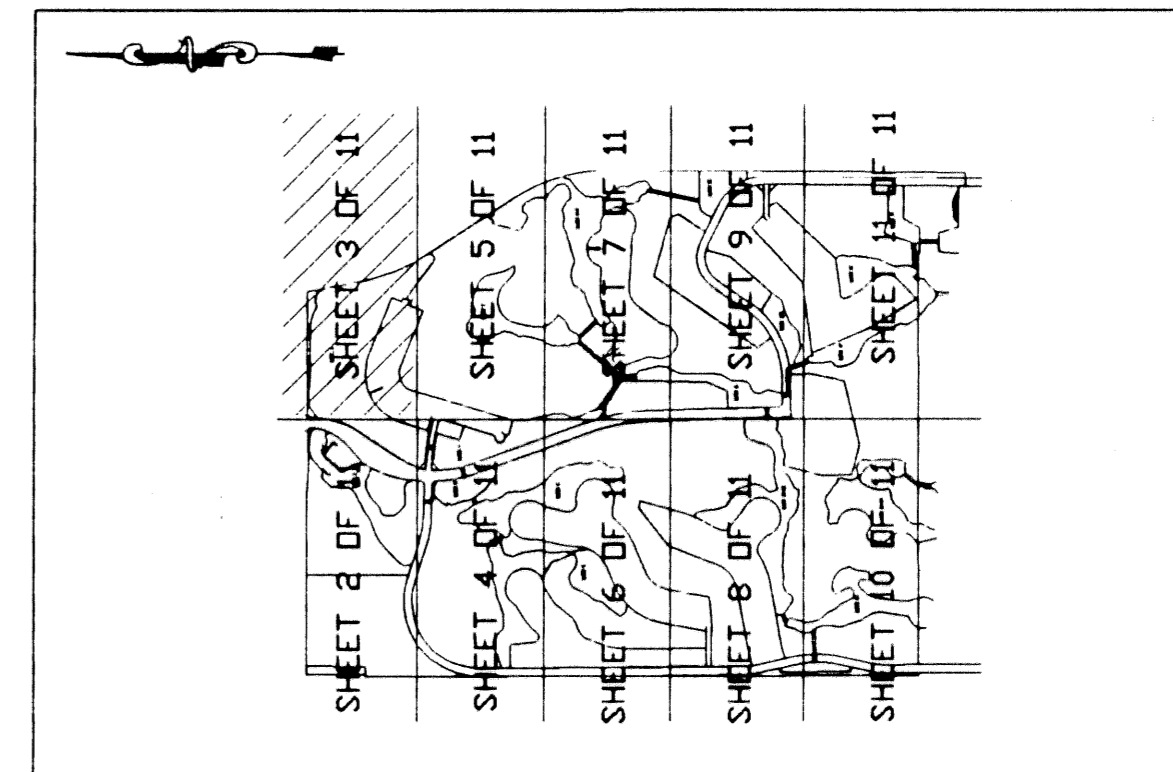


A PLAT OF IBIS GOLF AND COUNTRY CLUB PLAT NO. 14

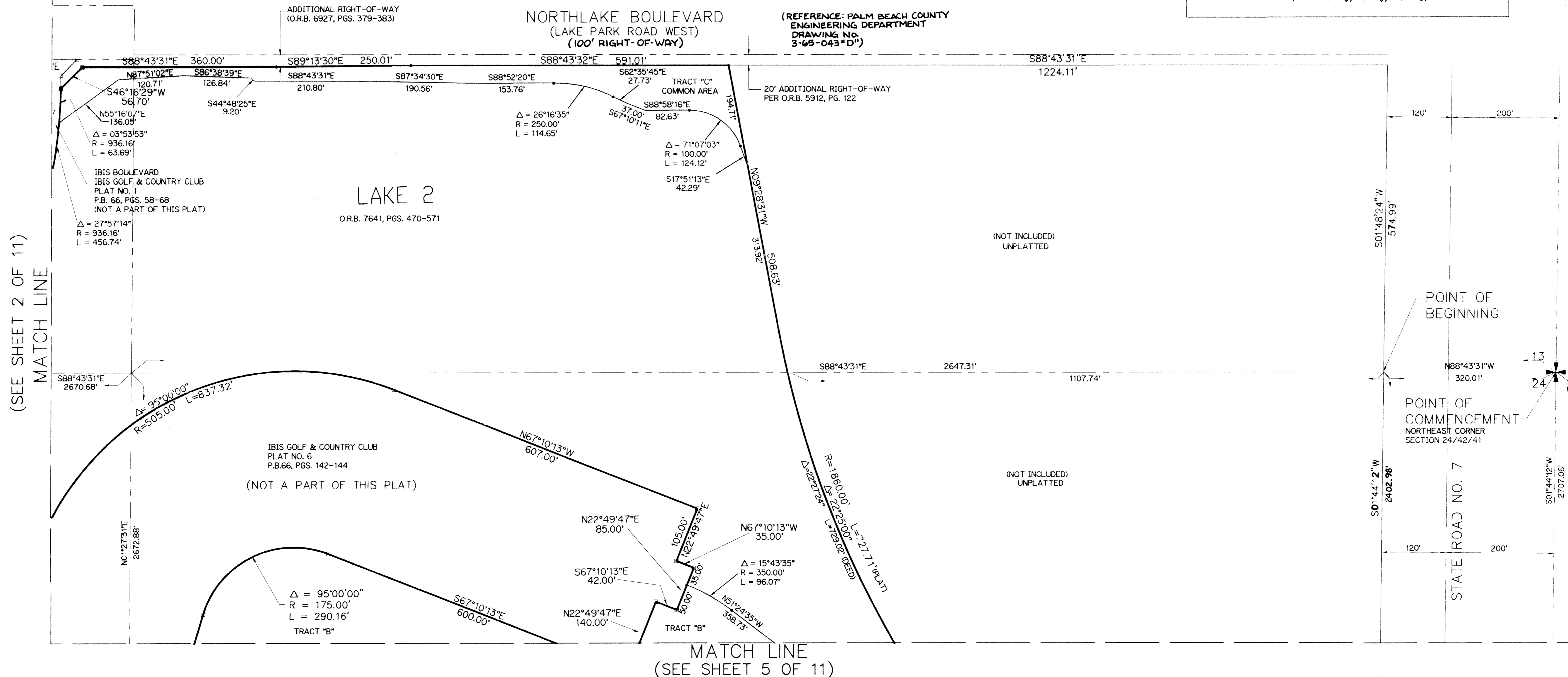
A PLANNED UNIT DEVELOPMENT
LYING IN SECTIONS 13, 24 AND 25, TOWNSHIP 42 SOUTH, RANGE 41 EAST
CITY OF WEST PALM BEACH, PALM BEACH COUNTY, FLORIDA

109

KEY MAP
(NOT TO SCALE)



- LEGEND:
- O.R.B. - OFFICIAL RECORD BOOK
 - P.B. - PLAT BOOK
 - PGS. - PAGES
 - W.M.E. - WATER MANAGEMENT EASEMENT
 - - PERMANENT REFERENCE MONUMENT FOUND NO. LB 959
 - - PERMANENT REFERENCE MONUMENT SET NO. LS 4382
 - ⊕ - SECTION CORNER
 - ⊕ - ONE-QUARTER SECTION CORNER



SUBDIVISION * Ibis Golf And Country Club Plat 14
BOOK 75
FLOOD ZONE
QUAD #
SE
PUD NAME C/West Palm Beach 13, 24, 25/42/41

FLOOD MAP #
ZONING
ZIP CODE



LINDAHL, BROWNING, FERRARI, & HELLSTROM, INC.
CONSULTING ENGINEERS, PLANNERS & SURVEYORS

210 JUPITER LAKES BLVD. SUITE 200 JUPITER, FL 33468 407-746-9248
2400 S.E. MONTEREY ROAD SUITE 306 STUART, FL 34996 407-286-3883
2222 COLONIAL ROAD SUITE 201 FT. PIERCE, FL 34950 407-461-2450
2000 PALM BEACH LAKES BLVD. SUITE 762 WEST PALM BEACH, FL 33409 407-684-3375

3 11
Sheet of